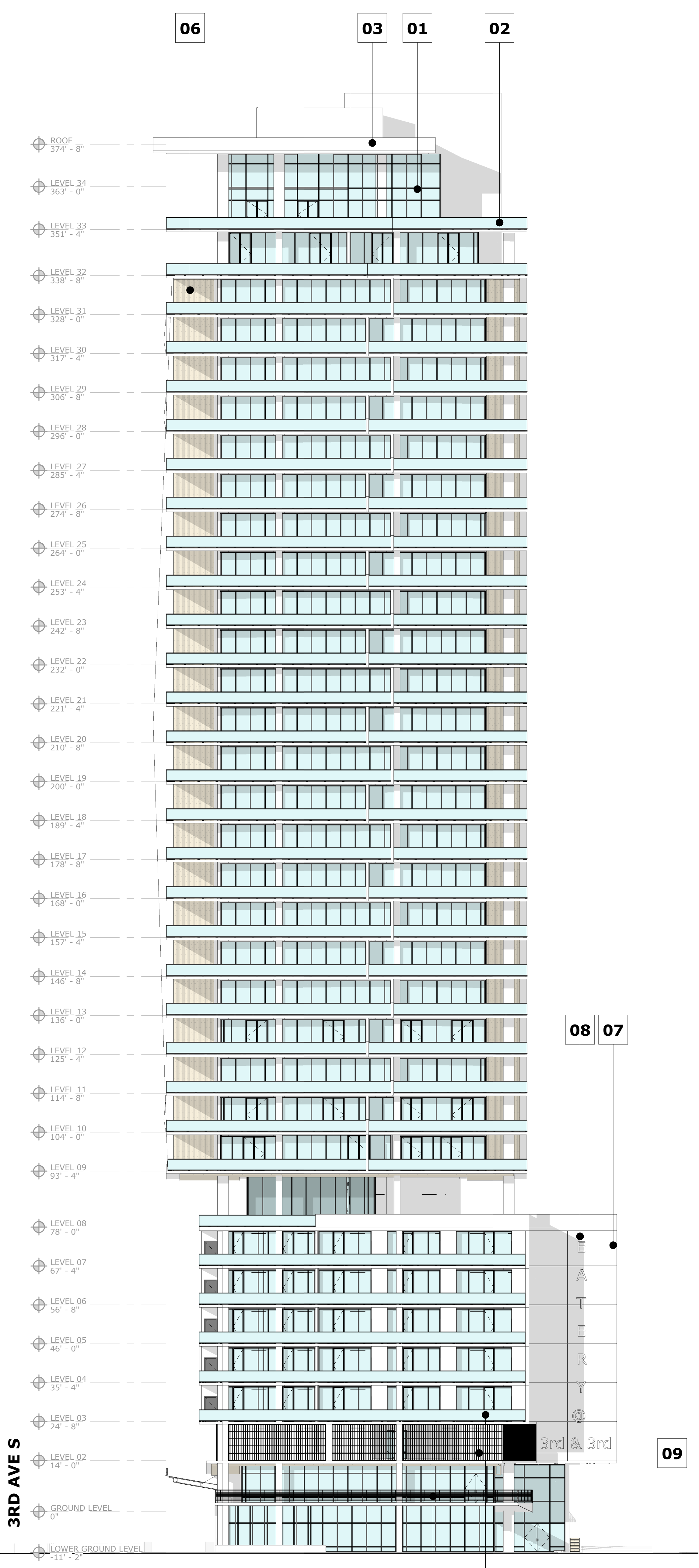
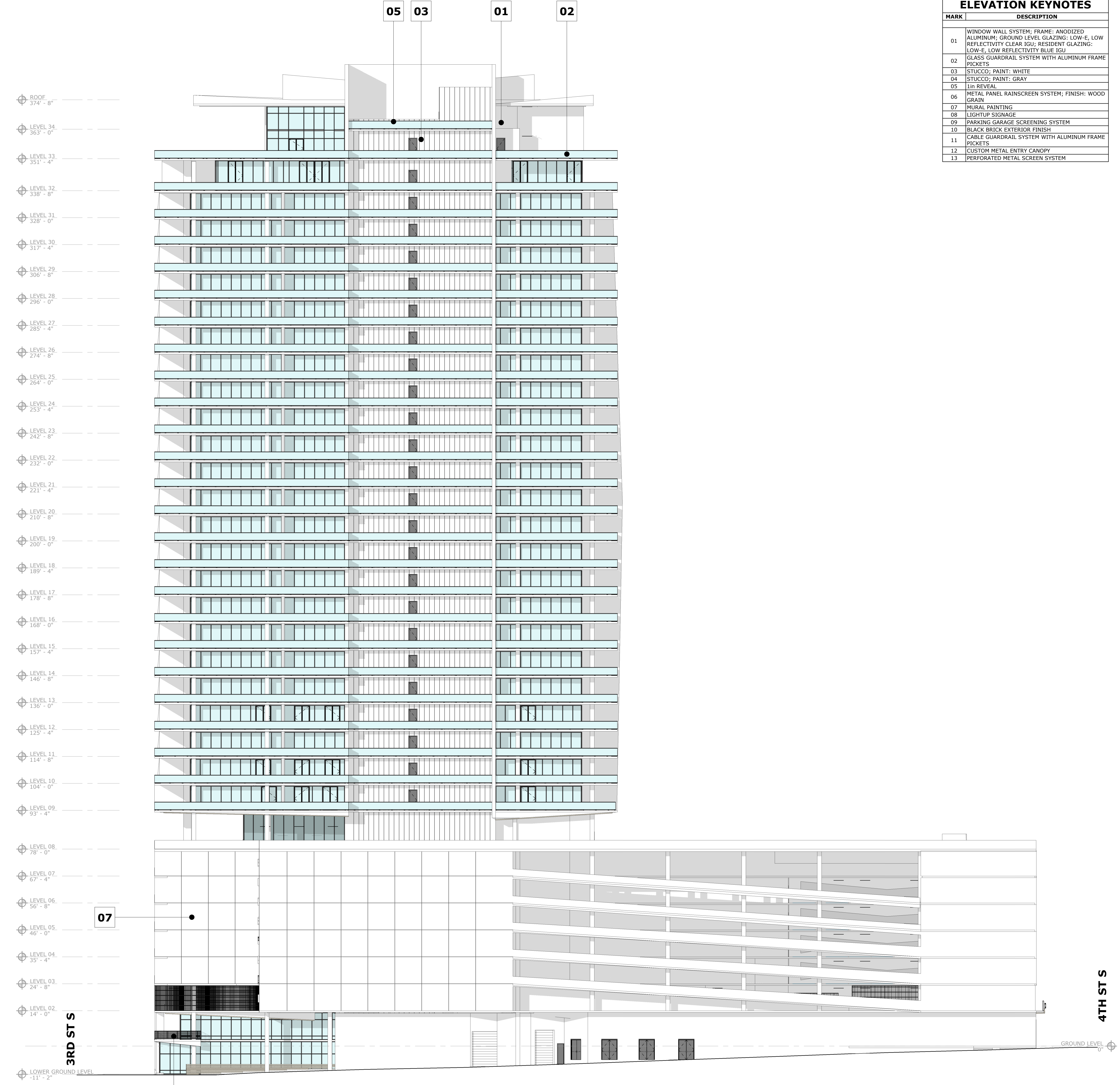


ELEVATION KEYNOTES	
MARK	DESCRIPTION
01	WINDOW WALL SYSTEM; FRAME: ANODIZED ALUMINUM; GROUND LEVEL GLAZING: LOW-E, LOW REFLECTIVITY CLEAR IGU; RESIDENT GLAZING: LOW-E, LOW REFLECTIVITY BLUE IGU
02	GLASS GUARDRAIL SYSTEM WITH ALUMINUM FRAME PICKETS
03	STUCCO; PAINT: WHITE
04	STUCCO; PAINT: GRAY
05	1in REVEAL
06	METAL PANEL RAINSCREEN SYSTEM; FINISH: WOOD GRAIN
07	MURAL PAINTING
08	LIGHTUP SIGNAGE
09	PARKING GARAGE SCREENING SYSTEM
10	BLACK BRICK EXTERIOR FINISH
11	CABLE GUARDRAIL SYSTEM WITH ALUMINUM FRAME PICKETS
12	CUSTOM METAL ENTRY CANOPY
13	PERFORATED METAL SCREEN SYSTEM

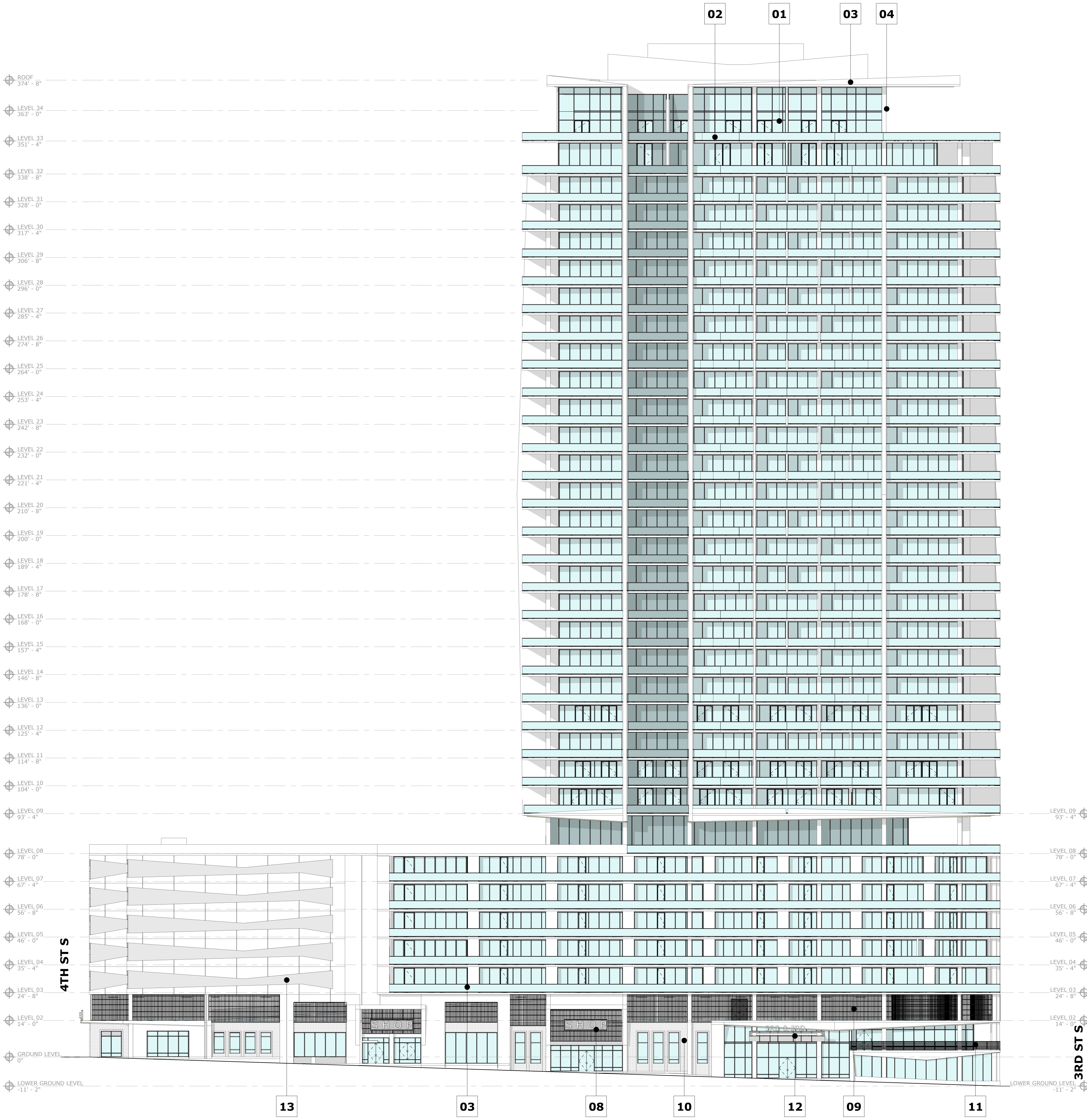


EAST BUILDING ELEVATION

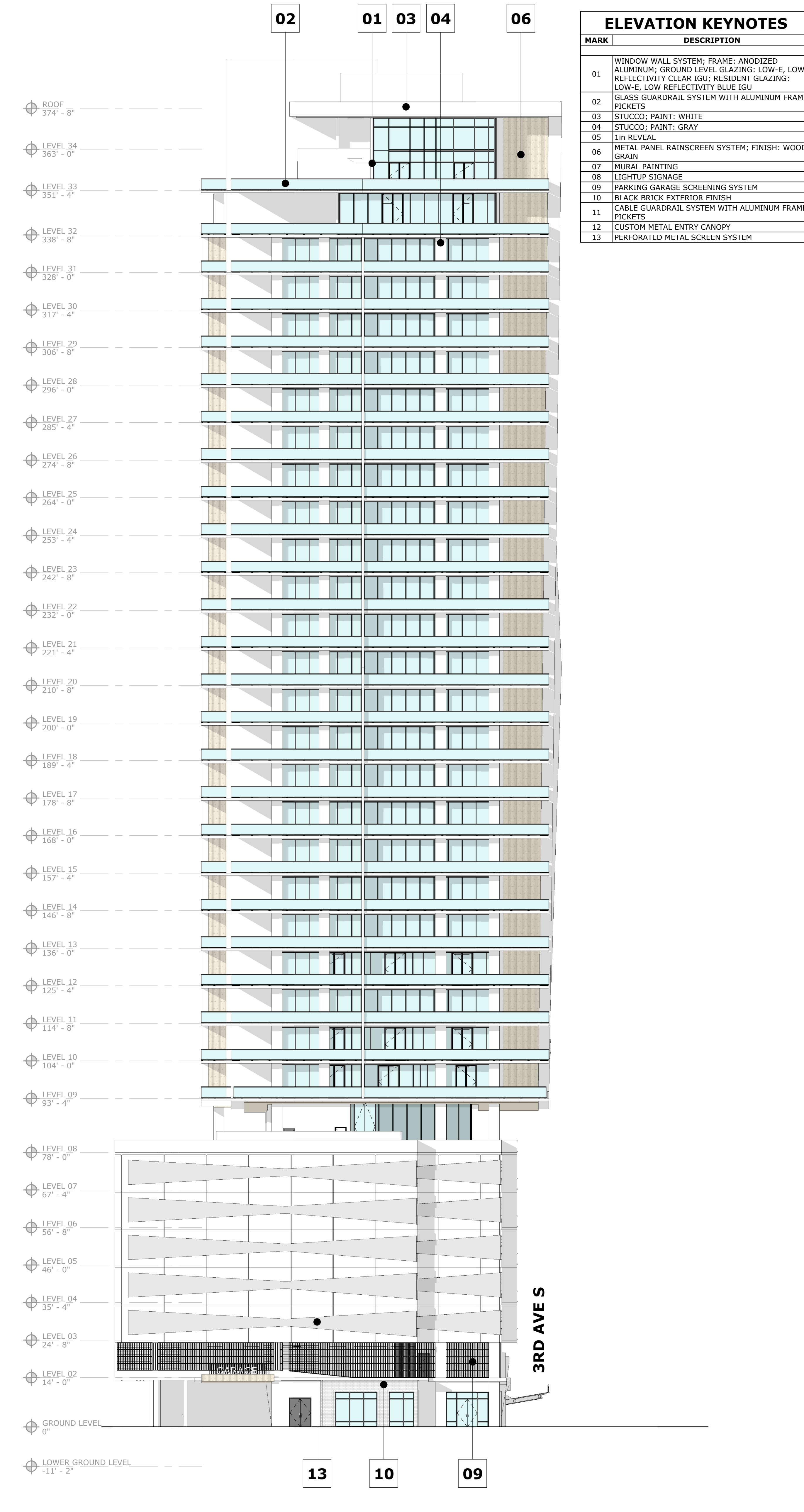


NORTH BUILDING ELEVATION

ELEVATION KEYNOTES	
MARK	DESCRIPTION
01	WINDOW WALL SYSTEM; FRAME: ANODIZED ALUMINUM; GROUND LEVEL GLAZING: LOW-E, LOW REFLECTIVITY CLEAR IGU; RESIDENT GLAZING: LOW-E, LOW REFLECTIVITY BLUE IGU
02	GLASS GUARDRAIL SYSTEM WITH ALUMINUM FRAME PICKETS
03	STUCCO; PAINT: WHITE
04	STUCCO; PAINT: GRAY
05	1in REVEAL
06	METAL PANEL RAINSCREEN SYSTEM; FINISH: WOOD GRAIN
07	MURAL PAINTING
08	LIGHTUP SIGNAGE
09	PARKING GARAGE SCREENING SYSTEM
10	BLACK BRICK EXTERIOR FINISH
11	CABLE GUARDRAIL SYSTEM WITH ALUMINUM FRAME PICKETS
12	CUSTOM METAL ENTRY CANOPY
13	PERFORATED METAL SCREEN SYSTEM

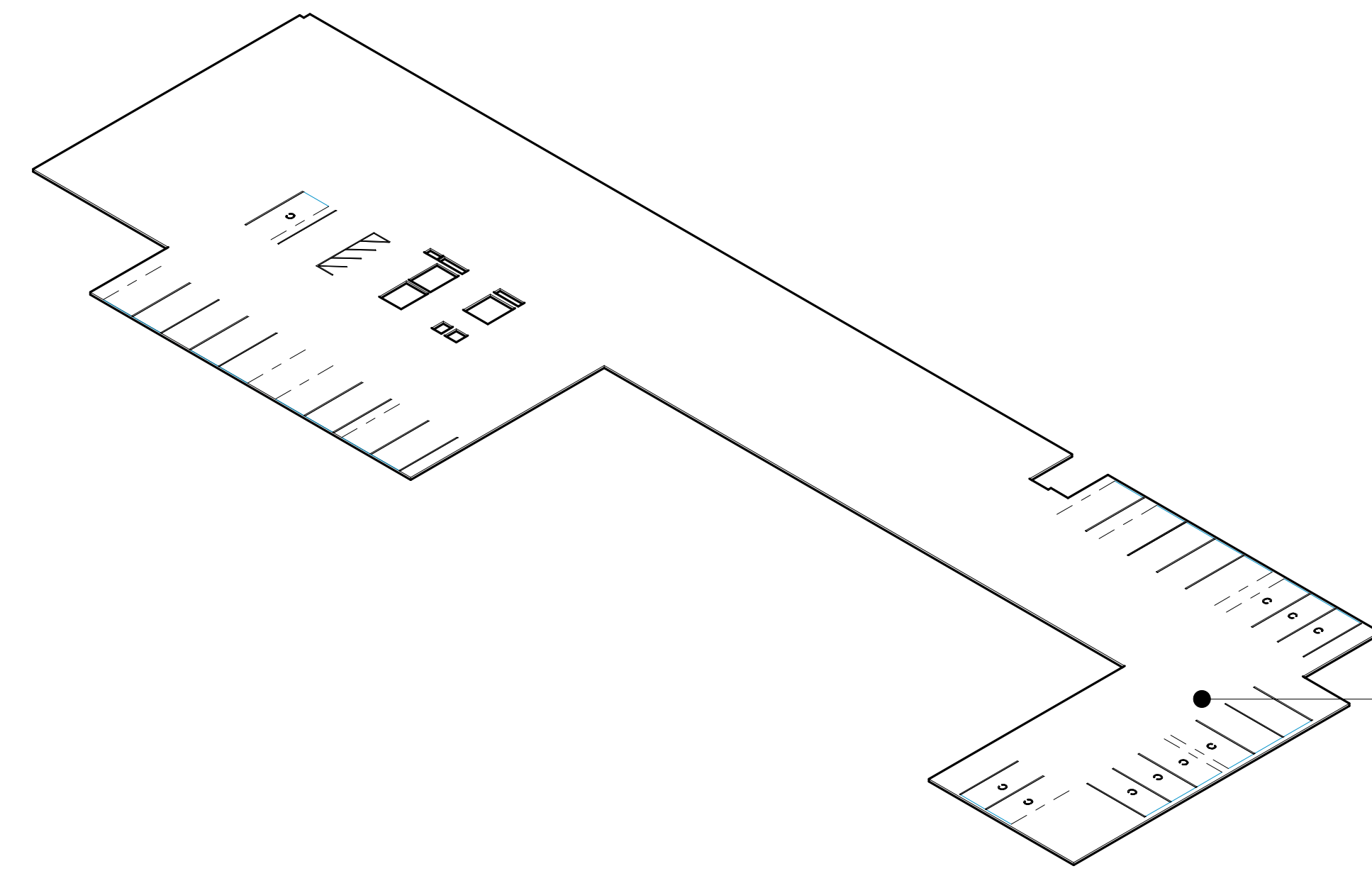


SOUTH BUILDING ELEVATION

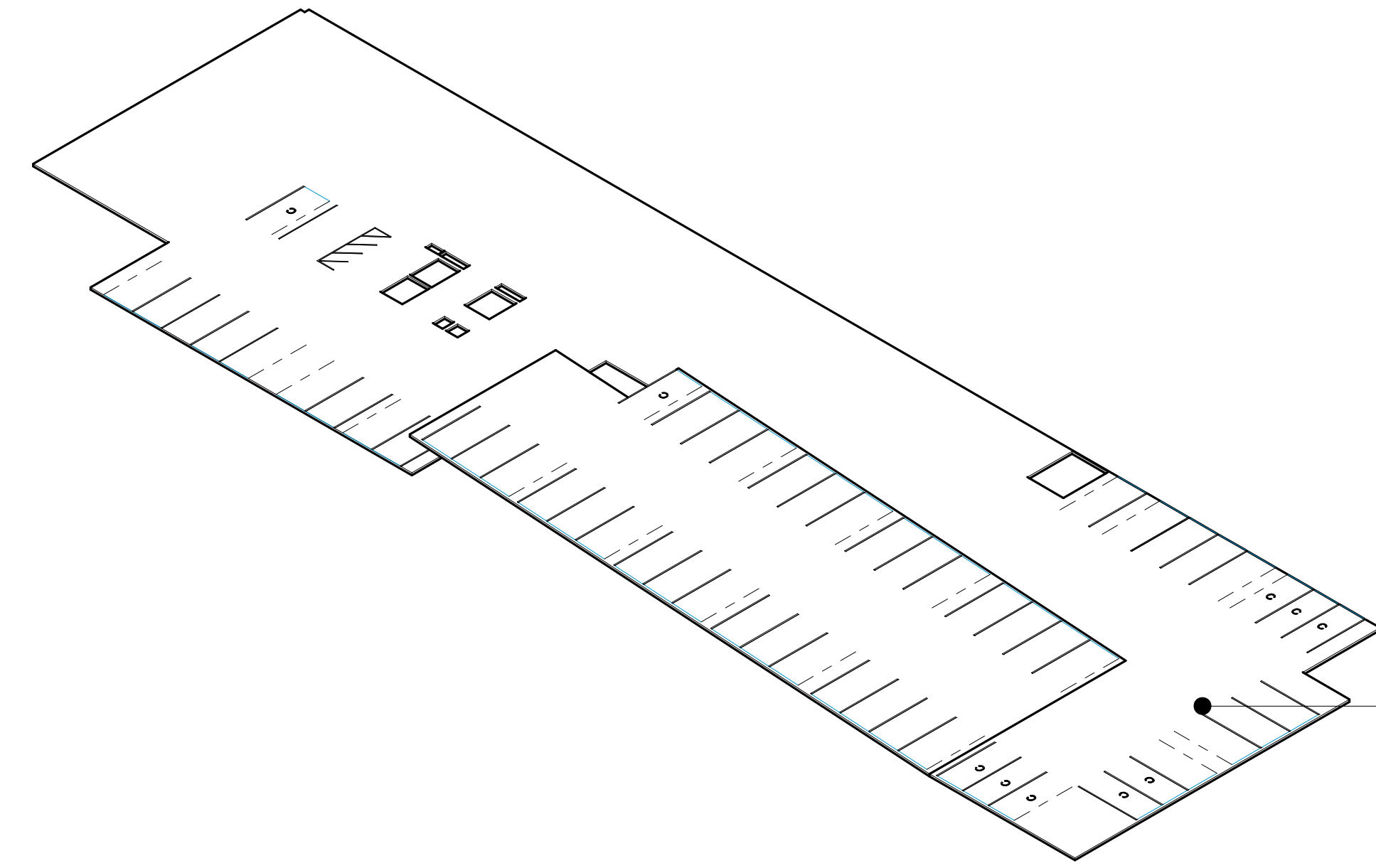


WEST BUILDING ELEVATION

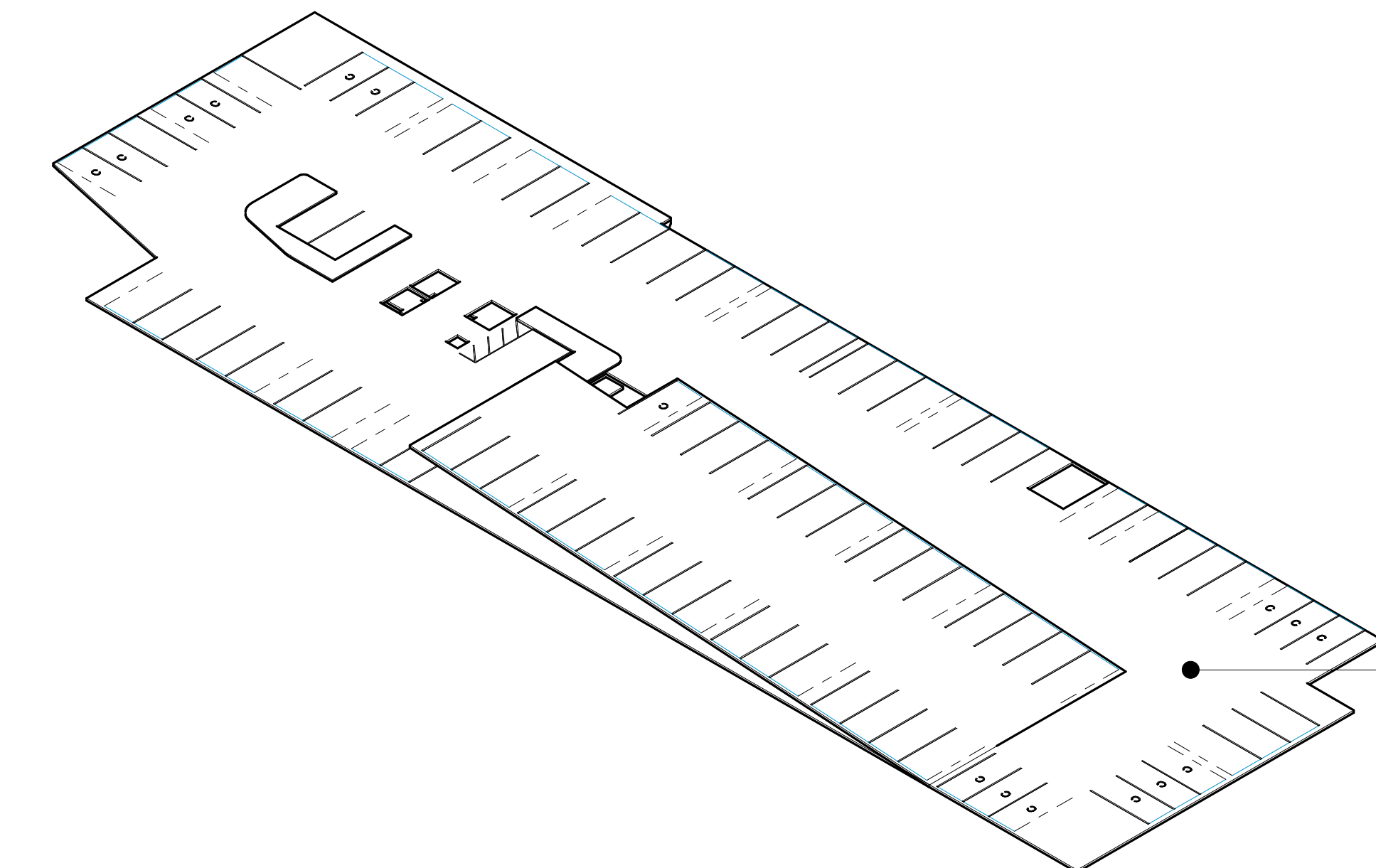
BUILDING ELEVATIONS



PARKING LVL 07
 FLAT PARKING 27 SPACES
 RAMP PARKING 0 SPACES



PARKING LVLS 03-06
 FLAT PARKING 28 SPACES (x4)
 RAMP PARKING 30 SPACES (x4)



PARKING LVL 02
 FLAT PARKING 54 SPACES
 RAMP PARKING 30 SPACES

PARKING - TOTAL	
TYPE	COUNT
LEVEL 02	
ADA	1
COMPACT	16
STANDARD	67
	84
LEVEL 03	
ADA	1
COMPACT	10
STANDARD	46
	57
LEVEL 04	
ADA	1
COMPACT	10
STANDARD	46
	57
LEVEL 05	
ADA	1
COMPACT	10
STANDARD	46
	57
LEVEL 06	
ADA	1
COMPACT	10
STANDARD	46
	57
LEVEL 07	
ADA	1
COMPACT	10
STANDARD	15
	26
TOTAL:	338

PARKING RATIO:

RETAIL PARKING: 19 SPACES

RESIDENTAIL PARKING: 319 SPACES

319 SPACES / 377 BEDS = .8 RATIO